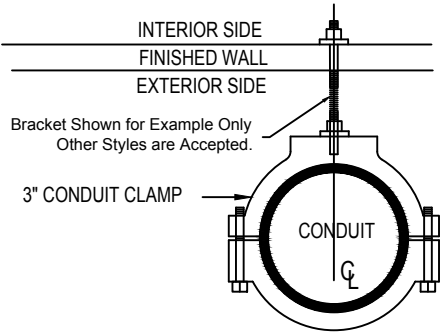


DETAIL OF CONDUIT STAND-OFF

PLAN A



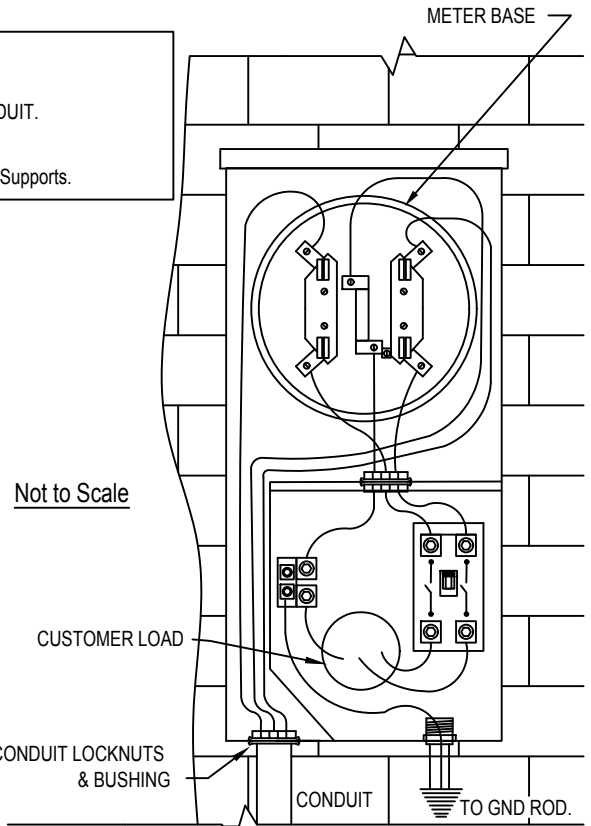
Bracket Shown for Example Only
Other Styles are Accepted.

NOTES:

1. INSTALL 3" CONDUIT STAND-OFF.
2. STAND-OFF MUST SUPPORT WEIGHT OF CONDUIT.
3. ALL PVC CONDUIT SHALL BE SCHEDULE 80.
4. ALL CONDUITS LONGER THAN 3' SHALL HAVE 2 Supports.

GENERAL NOTES:

1. All installations shall comply with the most current version of the National Electric Code. This included all wire sizing, and disconnect ratings.
2. UCEMC reserves the right NOT to connect service if the CO-OP representative considers the installation to not be according to these specifications.
3. Exterior service disconnects may not be required, ask your electrician to verify. if not required reference specification MB-UG1.
4. Meter shall not be installed inside porches, carports, garages or on any part of the building that may some day be enclosed.
5. For Mobile Homes see NEC 550.32 for information regarding Service Entrance equipment. Mobile Homes service equipment can not be located on the mobile home, see UCEMC SPEC MOP-1 for details.



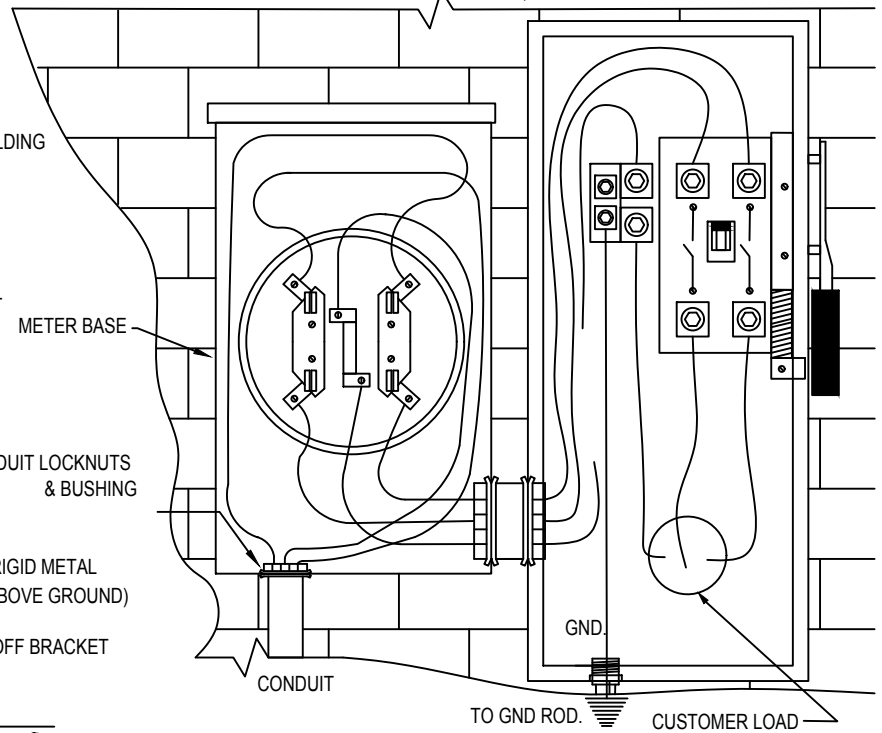
Not to Scale

CUSTOMER LOAD

2-CONDUIT LOCKNUTS & BUSHING

CONDUIT

TO GND ROD.

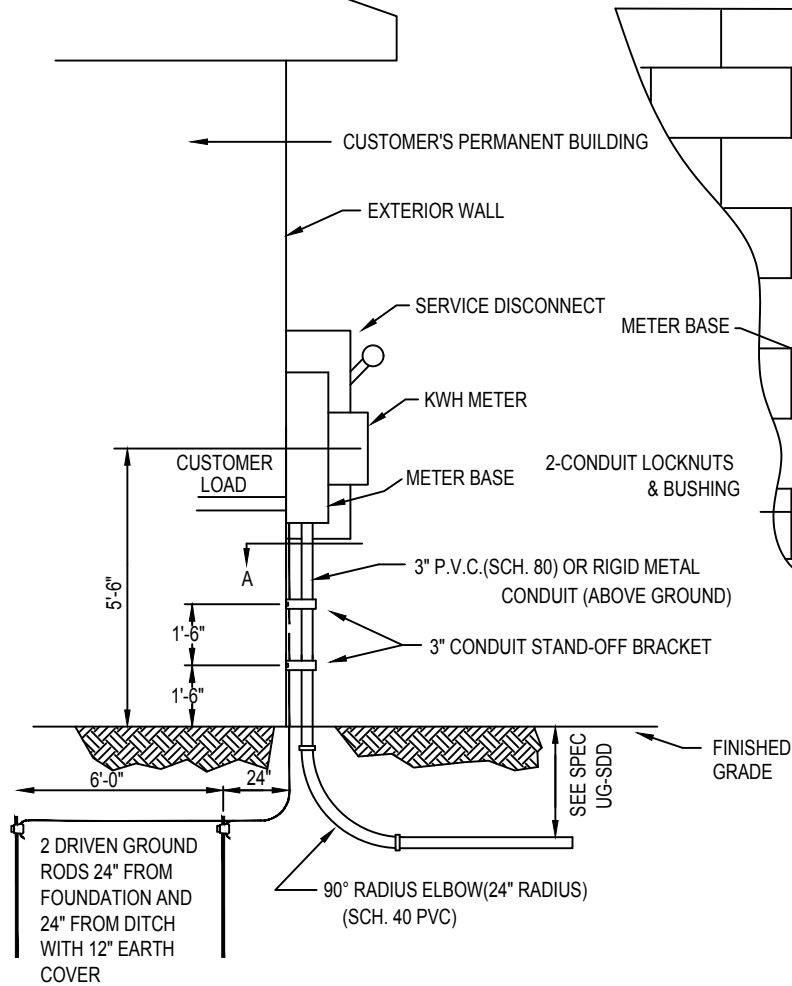


TO GND ROD.

CUSTOMER LOAD

NOTES:

1. Ground wires shall be unspliced in accordance with the most current version of the NEC.
2. The meter base shall be flush and securely mounted on the exterior wall where it will be easily accessible for UCEMC to access without the need to move objects or gain access from the home owner.
3. See Standard UG-SDD for the secondary conduit ditch detail.



2 DRIVEN GROUND RODS 24" FROM FOUNDATION AND 24" FROM DITCH WITH 12" EARTH COVER

90° RADIUS ELBOW(24" RADIUS) (SCH. 40 PVC)

FINISHED GRADE

5'-6"

1'-6"

1'-6"

6'-0"

24"

SEE SPEC UG-SDD



UNDERGROUND SERVICE PERMANENT METER BASE EXTERIOR DISCONNECT

DATE: 07-02-2019

STANDARD MB-UG 2