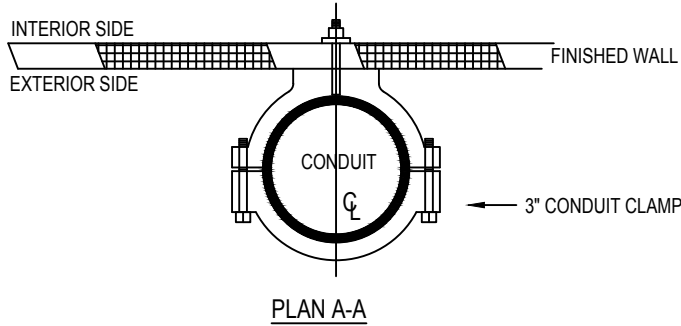


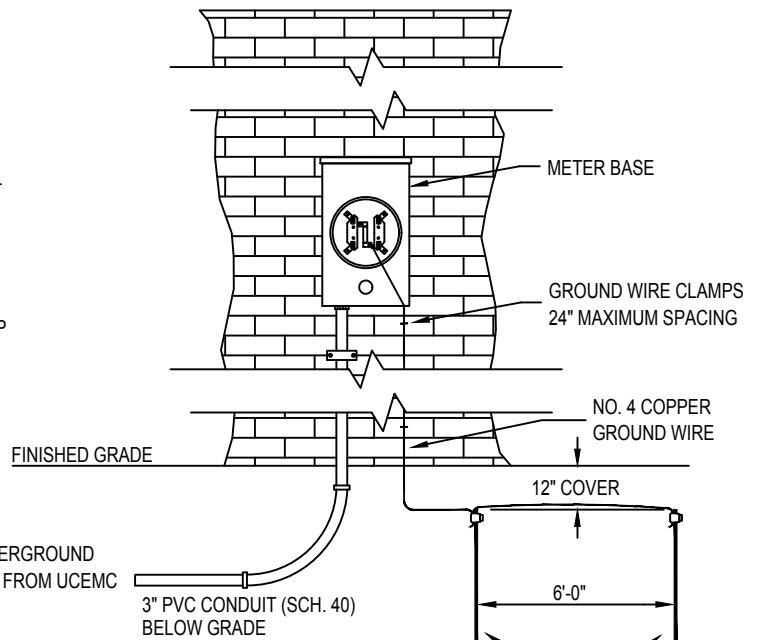
DETAIL OF CONDUIT STAND-OFF



PLAN A-A

NOTES:

1. INSTALL 3" CONDUIT STAND-OFF.
2. DRILL 3/4" HOLE ON CENTER OF CONDUIT.
3. USE 5/8" ALL-THREAD BOLT WITH LOCK WASHER INSIDE WALL OR MASONRY AND EXTEND FOR LOCK WASHER AND NUT.
4. STAND-OFF MUST SUPPORT WEIGHT OF CONDUIT.

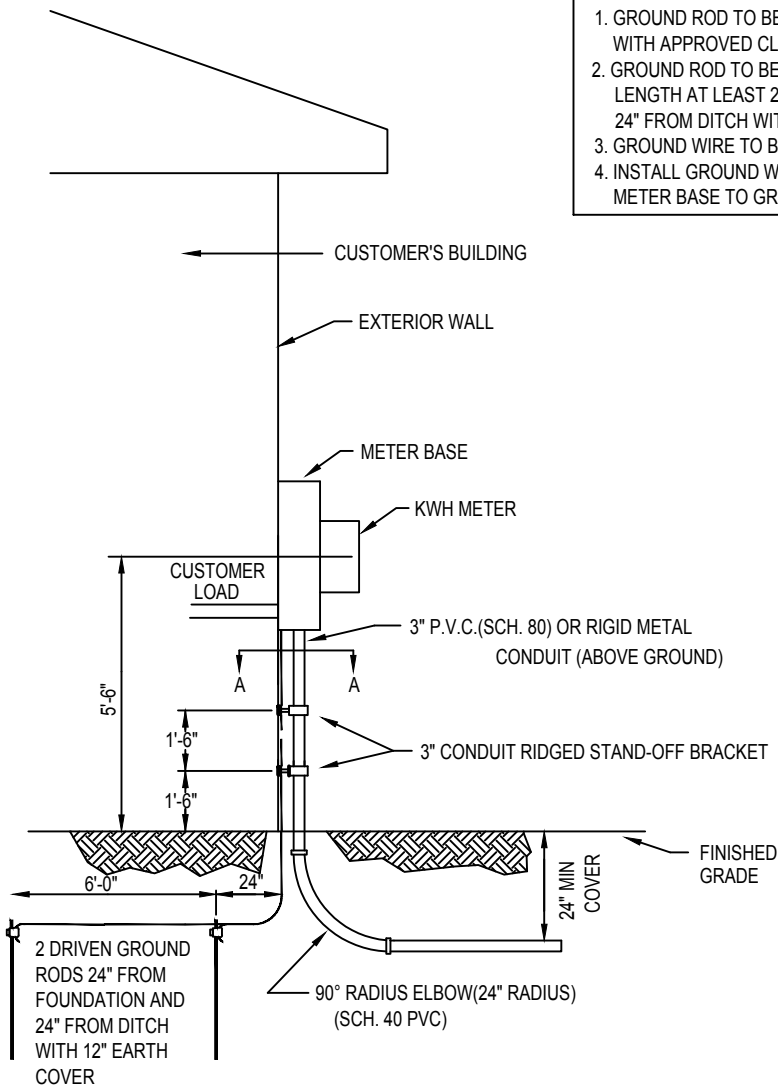


NOTES:

1. GROUND ROD TO BE COPPER CLAD WITH APPROVED CLAMP.
2. GROUND ROD TO BE DRIVEN IN GROUND FULL LENGTH AT LEAST 24" FROM FOUNDATION AND 24" FROM DITCH WITH 12" EARTH COVER.
3. GROUND WIRE TO BE NO. 4 COPPER MINIMUM.
4. INSTALL GROUND WIRE FROM GROUND LUG IN METER BASE TO GROUND ROD.

2-5/8" x 8' COPPER CLAD GROUND RODS WITH APPROVED CLAMP

PROVIDE AS MUCH SLACK AS POSSIBLE IN BOX



METER BASE

CUSTOMER LOAD

2-CONDUIT LOCKNUTS & BUSHING

CONDUIT

TO GND. ROD

NOTES:

1. There shall be a minimum of two conduit supports.
2. Ground wires shall be unsplined in accordance with the most current version of the NEC.
3. The meter base shall be flush and securely mounted on the exterior wall where it will be easily accessible for UCEMC to access without the need to move objects or gain access from the home owner.
4. See Standard UG-SDD for the secondary conduit ditch detail.



**UNDERGROUND SERVICE
PERMANENT METER BASE
INTERIOR DISCONNECT**

DATE: 04-18-2019

STANDARD
MB-UG 1